



PRODUCT RANGE

ATABEY CONCRETE PUMPING AND PLACING SOLUTIONS

Certificates



CERTIFICATE

ATTESTATION CERTIFICATE OF MACHINERY DIRECTIVE

Technical file of the company mentioned below has been inspected and audit has been completed successfully.
2006/42/EC Machinery Directive has been taken as reference for these process.

Company Name : **Atabey Beton Makinaları Sanayi Diş Tic. Ltd. Şti.**

Company Address : **Sarıy Mahallesi Keresteciler Sanayi Sitesi 4. Cadde No:39 Karaman/Karaman ANKARA / TURKEY**

Related Directives and Annex : **Machinery Directive 2006/42/EC / Annex VIII**

Related Standards : **EN ISO 12100, EN ISO 14120, EN ISO 13849-1, EN 60204-1**

Product Name : **Concrete Pumping and Paving Equipment**

Product Brand/Model/Type : **8313, 817, 818, 821, 8212, 8308, 8312, 8414, 8418, 8421, 8426, 8427, 8428, 8429, 8430, 8431, 8432, 8433, 8434, 8435, 8436, 8437, 8438, 8439, 8440, 8441, 8442, 8443, 8444, 8445, 8446, 8447, 8448, 8449, 8450, 8451, 8452, 8453, 8454, 8455, 8456, 8457, 8458, 8459, 8460, 8461, 8462, 8463, 8464, 8465, 8466, 8467, 8468, 8469, 8470, 8471, 8472, 8473, 8474, 8475, 8476, 8477, 8478, 8479, 8480, 8481, 8482, 8483, 8484, 8485, 8486, 8487, 8488, 8489, 8490, 8491, 8492, 8493, 8494, 8495, 8496, 8497, 8498, 8499, 8500, 8501, 8502, 8503, 8504, 8505, 8506, 8507, 8508, 8509, 8510, 8511, 8512, 8513, 8514, 8515, 8516, 8517, 8518, 8519, 8520, 8521, 8522, 8523, 8524, 8525, 8526, 8527, 8528, 8529, 8530, 8531, 8532, 8533, 8534, 8535, 8536, 8537, 8538, 8539, 8540, 8541, 8542, 8543, 8544, 8545, 8546, 8547, 8548, 8549, 8550, 8551, 8552, 8553, 8554, 8555, 8556, 8557, 8558, 8559, 8560, 8561, 8562, 8563, 8564, 8565, 8566, 8567, 8568, 8569, 8570, 8571, 8572, 8573, 8574, 8575, 8576, 8577, 8578, 8579, 8580, 8581, 8582, 8583, 8584, 8585, 8586, 8587, 8588, 8589, 8590, 8591, 8592, 8593, 8594, 8595, 8596, 8597, 8598, 8599, 8600, 8601, 8602, 8603, 8604, 8605, 8606, 8607, 8608, 8609, 8610, 8611, 8612, 8613, 8614, 8615, 8616, 8617, 8618, 8619, 8620, 8621, 8622, 8623, 8624, 8625, 8626, 8627, 8628, 8629, 8630, 8631, 8632, 8633, 8634, 8635, 8636, 8637, 8638, 8639, 8640, 8641, 8642, 8643, 8644, 8645, 8646, 8647, 8648, 8649, 8650, 8651, 8652, 8653, 8654, 8655, 8656, 8657, 8658, 8659, 8660, 8661, 8662, 8663, 8664, 8665, 8666, 8667, 8668, 8669, 8670, 8671, 8672, 8673, 8674, 8675, 8676, 8677, 8678, 8679, 8680, 8681, 8682, 8683, 8684, 8685, 8686, 8687, 8688, 8689, 8690, 8691, 8692, 8693, 8694, 8695, 8696, 8697, 8698, 8699, 8700, 8701, 8702, 8703, 8704, 8705, 8706, 8707, 8708, 8709, 8710, 8711, 8712, 8713, 8714, 8715, 8716, 8717, 8718, 8719, 8720, 8721, 8722, 8723, 8724, 8725, 8726, 8727, 8728, 8729, 8730, 8731, 8732, 8733, 8734, 8735, 8736, 8737, 8738, 8739, 8740, 8741, 8742, 8743, 8744, 8745, 8746, 8747, 8748, 8749, 8750, 8751, 8752, 8753, 8754, 8755, 8756, 8757, 8758, 8759, 8760, 8761, 8762, 8763, 8764, 8765, 8766, 8767, 8768, 8769, 8770, 8771, 8772, 8773, 8774, 8775, 8776, 8777, 8778, 8779, 8780, 8781, 8782, 8783, 8784, 8785, 8786, 8787, 8788, 8789, 8790, 8791, 8792, 8793, 8794, 8795, 8796, 8797, 8798, 8799, 8800, 8801, 8802, 8803, 8804, 8805, 8806, 8807, 8808, 8809, 8810, 8811, 8812, 8813, 8814, 8815, 8816, 8817, 8818, 8819, 8820, 8821, 8822, 8823, 8824, 8825, 8826, 8827, 8828, 8829, 8830, 8831, 8832, 8833, 8834, 8835, 8836, 8837, 8838, 8839, 8840, 8841, 8842, 8843, 8844, 8845, 8846, 8847, 8848, 8849, 8850, 8851, 8852, 8853, 8854, 8855, 8856, 8857, 8858, 8859, 8860, 8861, 8862, 8863, 8864, 8865, 8866, 8867, 8868, 8869, 8870, 8871, 8872, 8873, 8874, 8875, 8876, 8877, 8878, 8879, 8880, 8881, 8882, 8883, 8884, 8885, 8886, 8887, 8888, 8889, 8890, 8891, 8892, 8893, 8894, 8895, 8896, 8897, 8898, 8899, 8900, 8901, 8902, 8903, 8904, 8905, 8906, 8907, 8908, 8909, 8910, 8911, 8912, 8913, 8914, 8915, 8916, 8917, 8918, 8919, 8920, 8921, 8922, 8923, 8924, 8925, 8926, 8927, 8928, 8929, 8930, 8931, 8932, 8933, 8934, 8935, 8936, 8937, 8938, 8939, 8940, 8941, 8942, 8943, 8944, 8945, 8946, 8947, 8948, 8949, 8950, 8951, 8952, 8953, 8954, 8955, 8956, 8957, 8958, 8959, 8960, 8961, 8962, 8963, 8964, 8965, 8966, 8967, 8968, 8969, 8970, 8971, 8972, 8973, 8974, 8975, 8976, 8977, 8978, 8979, 8980, 8981, 8982, 8983, 8984, 8985, 8986, 8987, 8988, 8989, 8990, 8991, 8992, 8993, 8994, 8995, 8996, 8997, 8998, 8999, 9000, 9001, 9002, 9003, 9004, 9005, 9006, 9007, 9008, 9009, 9010, 9011, 9012, 9013, 9014, 9015, 9016, 9017, 9018, 9019, 9020, 9021, 9022, 9023, 9024, 9025, 9026, 9027, 9028, 9029, 9030, 9031, 9032, 9033, 9034, 9035, 9036, 9037, 9038, 9039, 9040, 9041, 9042, 9043, 9044, 9045, 9046, 9047, 9048, 9049, 9050, 9051, 9052, 9053, 9054, 9055, 9056, 9057, 9058, 9059, 9060, 9061, 9062, 9063, 9064, 9065, 9066, 9067, 9068, 9069, 9070, 9071, 9072, 9073, 9074, 9075, 9076, 9077, 9078, 9079, 9080, 9081, 9082, 9083, 9084, 9085, 9086, 9087, 9088, 9089, 9090, 9091, 9092, 9093, 9094, 9095, 9096, 9097, 9098, 9099, 9100, 9101, 9102, 9103, 9104, 9105, 9106, 9107, 9108, 9109, 9110, 9111, 9112, 9113, 9114, 9115, 9116, 9117, 9118, 9119, 9120, 9121, 9122, 9123, 9124, 9125, 9126, 9127, 9128, 9129, 9130, 9131, 9132, 9133, 9134, 9135, 9136, 9137, 9138, 9139, 9140, 9141, 9142, 9143, 9144, 9145, 9146, 9147, 9148, 9149, 9150, 9151, 9152, 9153, 9154, 9155, 9156, 9157, 9158, 9159, 9160, 9161, 9162, 9163, 9164, 9165, 9166, 9167, 9168, 9169, 9170, 9171, 9172, 9173, 9174, 9175, 9176, 9177, 9178, 9179, 9180, 9181, 9182, 9183, 9184, 9185, 9186, 9187, 9188, 9189, 9190, 9191, 9192, 9193, 9194, 9195, 9196, 9197, 9198, 9199, 9200, 9201, 9202, 9203, 9204, 9205, 9206, 9207, 9208, 9209, 9210, 9211, 9212, 9213, 9214, 9215, 9216, 9217, 9218, 9219, 9220, 9221, 9222, 9223, 9224, 9225, 9226, 9227, 9228, 9229, 9230, 9231, 9232, 9233, 9234, 9235, 9236, 9237, 9238, 9239, 9240, 9241, 9242, 9243, 9244, 9245, 9246, 9247, 9248, 9249, 9250, 9251, 9252, 9253, 9254, 9255, 9256, 9257, 9258, 9259, 9260, 9261, 9262, 9263, 9264, 9265, 9266, 9267, 9268, 9269, 9270, 9271, 9272, 9273, 9274, 9275, 9276, 9277, 9278, 9279, 9280, 9281, 9282, 9283, 9284, 9285, 9286, 9287, 9288, 9289, 9290, 9291, 9292, 9293, 9294, 9295, 9296, 9297, 9298, 9299, 9300, 9301, 9302, 9303, 9304, 9305, 9306, 9307, 9308, 9309, 9310, 9311, 9312, 9313, 9314, 9315, 9316, 9317, 9318, 9319, 9320, 9321, 9322, 9323, 9324, 9325, 9326, 9327, 9328, 9329, 9330, 9331, 9332, 9333, 9334, 9335, 9336, 9337, 9338, 9339, 9340, 9341, 9342, 9343, 9344, 9345, 9346, 9347, 9348, 9349, 9350, 9351, 9352, 9353, 9354, 9355, 9356, 9357, 9358, 9359, 9360, 9361, 9362, 9363, 9364, 9365, 9366, 9367, 9368, 9369, 9370, 9371, 9372, 9373, 9374, 9375, 9376, 9377, 9378, 9379, 9380, 9381, 9382, 9383, 9384, 9385, 9386, 9387, 9388, 9389, 9390, 9391, 9392, 9393, 9394, 9395, 9396, 9397, 9398, 9399, 9400, 9401, 9402, 9403, 9404, 9405, 9406, 9407, 9408, 9409, 9410, 9411, 9412, 9413, 9414, 9415, 9416, 9417, 9418, 9419, 9420, 9421, 9422, 9423, 9424, 9425, 9426, 9427, 9428, 9429, 9430, 9431, 9432, 9433, 9434, 9435, 9436, 9437, 9438, 9439, 9440, 9441, 9442, 9443, 9444, 9445, 9446, 9447, 9448, 9449, 9450, 9451, 9452, 9453, 9454, 9455, 9456, 9457, 9458, 9459, 9460, 9461, 9462, 9463, 9464, 9465, 9466, 9467, 9468, 9469, 9470, 9471, 9472, 9473, 9474, 9475, 9476, 9477, 9478, 9479, 9480, 9481, 9482, 9483, 9484, 9485, 9486, 9487, 9488, 9489, 9490, 9491, 9492, 9493, 9494, 9495, 9496, 9497, 9498, 9499, 9500, 9501, 9502, 9503, 9504, 9505, 9506, 9507, 9508, 9509, 9510, 9511, 9512, 9513, 9514, 9515, 9516, 9517, 9518, 9519, 9520, 9521, 9522, 9523, 9524, 9525, 9526, 9527, 9528, 9529, 9530, 9531, 9532, 9533, 9534, 9535, 9536, 9537, 9538, 9539, 9540, 9541, 9542, 9543, 9544, 9545, 9546, 9547, 9548, 9549, 9550, 9551, 9552, 9553, 9554, 9555, 9556, 9557, 9558, 9559, 9560, 9561, 9562, 9563, 9564, 9565, 9566, 9567, 9568, 9569, 9570, 9571, 9572, 9573, 9574, 9575, 9576, 9577, 9578, 9579, 9580, 9581, 9582, 9583, 9584, 9585, 9586, 9587, 9588, 9589, 9590, 9591, 9592, 9593, 9594, 9595, 9596, 9597, 9598, 9599, 9600, 9601, 9602, 9603, 9604, 9605, 9606, 9607, 9608, 9609, 9610, 9611, 9612, 9613, 9614, 9615, 9616, 9617, 9618, 9619, 9620, 9621, 9622, 9623, 9624, 9625, 9626, 9627, 9628, 9629, 9630, 9631, 9632, 9633, 9634, 9635, 9636, 9637, 9638, 9639, 9640, 9641, 9642, 9643, 9644, 9645, 9646, 9647, 9648, 9649, 9650, 9651, 9652, 9653, 9654, 9655, 9656, 9657, 9658, 9659, 9660, 9661, 9662, 9663, 9664, 9665, 9666, 9667, 9668, 9669, 9670, 9671, 9672, 9673, 9674, 9675, 9676, 9677, 9678, 9679, 9680, 9681, 9682, 9683, 9684, 9685, 9686, 9687, 9688, 9689, 9690, 9691, 9692, 9693, 9694, 9695, 9696, 9697, 9698, 9699, 9700, 9701, 9702, 9703, 9704, 9705, 9706, 9707, 9708, 9709, 9710, 9711, 9712, 9713, 9714, 9715, 9716, 9717, 9718, 9719, 9720, 9721, 9722, 9723, 9724, 9725, 9726, 9727, 9728, 9729, 9730, 9731, 9732, 9733, 9734, 9735, 9736, 9737, 9738, 9739, 9740, 9741, 9742, 9743, 9744, 9745, 9746, 9747, 9748, 9749, 9750, 9751, 9752, 9753, 9754, 9755, 9756, 9757, 9758, 9759, 9760, 9761, 9762, 9763, 9764, 9765, 9766, 9767, 9768, 9769, 9770, 9771, 9772, 9773, 9774, 9775, 9776, 9777, 9778, 9779, 9780, 9781, 9782, 9783, 9784, 9785, 9786, 9787, 9788, 9789, 9790, 9791, 9792, 9793, 9794, 9795, 9796, 9797, 9798, 9799, 9800, 9801, 9802, 9803, 9804, 9805, 9806, 9807, 9808, 9809, 9810, 9811, 9812, 9813, 9814, 9815, 9816, 9817, 9818, 9819, 9820, 9821, 9822, 9823, 9824, 9825, 9826, 9827, 9828, 9829, 9830, 9831, 9832, 9833, 9834, 9835, 9836, 9837, 9838, 9839, 9840, 9841, 9842, 9843, 9844, 9845, 9846, 9847, 9848, 9849, 9850, 9851, 9852, 9853, 9854, 9855, 9856, 9857, 9858, 9859, 9860, 9861, 9862, 9863, 9864, 9865, 9866, 9867, 9868, 9869, 9870, 9871, 9872, 9873, 9874, 9875, 9876, 9877, 9878, 9879, 9880, 9881, 9882, 9883, 9884, 9885, 9886, 9887, 9888, 9889, 9890, 9891, 9892, 9893, 9894, 9895, 9896, 9897, 9898, 9899, 9900, 9901, 9902, 9903, 9904, 9905, 9906, 9907, 9908, 9909, 9910, 9911, 9912, 9913, 9914, 9915, 9916, 9917, 9918, 9919, 9920, 9921, 9922, 9923, 9924, 9925, 9926, 9927, 9928, 9929, 9930, 9931, 9932, 9933, 9934, 9935, 9936, 9937, 9938, 9939, 9940, 9941, 9942, 9943, 9944, 9945, 9946, 9947, 9948, 9949, 9950, 9951, 9952, 9953, 9954, 9955, 9956, 9957, 9958, 9959, 9960, 9961, 9962, 9963, 9964, 9965, 9966, 9967, 9968, 9969, 9970, 9971, 9972, 9973, 9974, 9975, 9976, 9977, 9978, 9979, 9980, 9981, 9982, 9983, 9984, 9985, 9986, 9987, 9988, 9989, 9990, 9991, 9992, 9993, 9994, 9995, 9996, 9997, 9998, 9999, 10000**

Certificate Number : **M.2021.103.ST.1144.01**

Initial Assessment Date : **24.11.2021**

Registration Date : **03.12.2021**

Release Date/No : **1**

Expiry Date : **03.12.2022**




Address: **Muhalevi Mahallesi 2023 Sokak 39/11 Sarıy Mah. 46100 Çankırı - ANKARA - TÜRKİYE**

Phone: **+90 312 440 83 90 Fax: +90 312 440 02 74**

E-mail: **info@udem.com.tr - www.udem.com.tr**




Sertifika CERTIFICATE

ATABEY BETON MAKİNALARI SANAYİ DİŞ TİCARET LTD. ŞTİ.

**SARAY MAHALLESİ KERESTECİLER SANAYİ SİTESİ 4. CADDE NO: 39
KARAMANKAZAN/ANKARA/TÜRKİYE**

ISO 9001:2015

Kapsam/Scope

BETON DÖKME VE SERME MAKİNALARI, BETON POMPALARI, İMALAT, SATIŞ, KİRALAMA VE SERVİS HİZMETLERİ

CONCRETE CASTING AND PAVING MACHINES, CONCRETE PUMPS, MANUFACTURE, SALES, RENTAL AND SERVICES

This certificate is valid until 31/12/2021 - Bu sertifika 31/12/2021 tarihine kadar geçerlidir.

Single ISO 9001 Certificate Number	: MTS-15560
Issue Date / Date of Issue	: 1.11.2019
Renewal Date / Date of Renewal	: 30.11.2021
Valid Until / Date of Validity	: 31.10.2022
Registration Number	: 062

This certificate is valid until 31/12/2021 - Bu sertifika 31/12/2021 tarihine kadar geçerlidir.




sigmacert

İstanbul Mahallesi Çarşı Sokak No: 3/15
Etiler/Beşiktaş/İstanbul - TÜRKİYE
Tel: +90 212 480 83 90

NUMBER ONE FOR SATISFACTION



Noventà di Piave, 20/01/21

TO WHOM IT MAY CONCERN

We, METALGALANTE S.p.A., hereby confirm that "ATABEY BETON MAKİNALARI SANAYİ DİŞ TİCARET LTD. ŞTİ." is our sole distributor agent and exclusive dealer in Turkey and Northern Cyprus.

İLGİLİ MAKAMA

Böyle METALGALANTE S.p.A. olarak istbu belge ile "ATABEY BETON MAKİNALARI SANAYİ DİŞ TİCARET LTD. ŞTİ." nin Türkiye ve Kuzey Kıbrıs temsilcimiz olduğunu teyid ederiz.

This certificate is valid until 31/12/2021 - Bu sertifika 31/12/2021 tarihine kadar geçerlidir.

Yours Faithfully


Simone Basselli
Expert Area Manager

METALGALANTE S.p.A.
METALGALANTE S.p.A.
Via S. Maria Maddalena 100, 36018 Lugo (Verona) - Italy
Tel: +39 0445 400000 - Fax: +39 0445 400001
E-mail: info@metalgalante.it - www.metalgalante.it

METALGALANTE S.p.A.

Verona - Italy | Noventà di Piave (Treviso) Italy | E-mail: info@metalgalante.it - www.metalgalante.it
Noventà di Piave - Italy | Noventà di Piave (Treviso) Italy | E-mail: info@metalgalante.it - www.metalgalante.it
Noventà di Piave - Italy | Noventà di Piave (Treviso) Italy | E-mail: info@metalgalante.it - www.metalgalante.it

Contents

Concrete Pumps

Scorpion Series p. 5



CP Series p. 9



Concrete Distributors

B Series p. 13



M Series p. 19



BW Series p. 23



PS Series p. 27





Atabey Construction Equipment

Concrete is the main requirement for building new and modern cities, satellite cities, hydroelectric projects, bridges, tunnels, road and art constructions. A lot of equipment are used from the preparation of the concrete up to placing it to the final point and it is extremely important to find the best solution without disturbing the concrete.

Based on these requirements, as Atabey Construction Equipment, we produce the best solutions for pumping the concrete and placing it to the final point with our advance production technology and facilities, energetic production and operational team.

By making the customer our number one priority after the sale we enjoy the highest repeated sales of any manufacturer of pumping equipment. Hard work, determination and a commitment to quality...

By offering ATABEY's leading-edge technology and reliable service, we have been striving to satisfy our customers with 15 years of experience. And it's these customers that we thank for allowing us to be a part of many successful and challenging projects.

It is our goal to help you achieve increased productivity through reliable, efficient machines that demonstrate value to your business both today and tomorrow.



Scorpion Series





Unique in the World!

The Scorpion concrete pump with hydraulic placing boom is often preferred for hydroelectric projects, bridges, tunnels, road and art constructions, industrial construction, depot-hangar constructions and dam projects. Generates maximum saving in time and money with the pumping feature that turns the maximum diesel power into hydraulic pressure.

One of the most important advantages of Scorpion is the efficient use of “boom reach”. Thanks to its compact structure and 4x4 traction, Scorpion can get closer to the construction site, therefore the entire boom length can be used for access.

Easily moved in construction sites by the remote control system and no need for crane to load to a truck for long distance transportation. Also all hydraulic system is controlled from the control panel when the remote control unit is not used.

The **4x4 propulsion system** is very useful when the terrain conditions are rough on sites and the unit needs to travel in narrow streets to get to the final concrete placing point.

Unique Design

The whole idea of “stationary concrete pump with 4 x 4 traction system” is most affordable and practical solution when the ready mix concrete system is at a distance from the job-site and the available ready-mixed concrete is costly.

Wireless Remote Control System



4X4 Propulsion System

Closest And Perfect Positioning
To The Application Area

It Facilitates Pouring Concrete
In Places Where Tunnel
Villa And Land Conditions Are Difficult



Concrete Pumps / Scorpion Series



We Are Pouring The Concrete of Four Continents From Asia to Africa, from America to Europe...



CP Series





Stationary Concrete Pumps

All Atabey Concrete Pumps are designed by our own engineers. The diesel engines (Kubota-Perkins-Cummins) and the hydraulic pump (Japanese Kawasaki) with variable flow that we use for our concrete pumps are leading brands in the international market.

The hydraulic pump with variable flow provides higher pressure when the concrete pipe line is blocked and returns back to normal pressure when the blockage is opened. With the Central Greasing System, the equipment can be greased up regularly by the operator. And also with option of Automatic Greasing System, the equipment is greased constantly by the automatic system and this solves the problem of equipment not getting greased up regularly.

This dramatically reduces the time and money loss, caused by operator error. The wear parts used on our equipment are all simple and easily obtainable in the international markets.

Nowadays, multi-function processors are available and they are beginning to be used in construction machinery. But Atabey Construction Equipment does not change the simple ways of using the equipment and stays as “User Friendly Equipment”.



Electro hydraulic control elements are designed and installed for easy access and replacement when necessary to change the parts. Also all the electrical parts are easily accessible by opening the control panel lids. Users continue their work quickly on simple faults by changing the necessary part easier rather than changing the integrated unit.



Concrete Pumping
at 175 m Height



Economical Solution For;

- Hire-Rise Buildings
- Long Distance Constructions
- Tunnel Constructions
- Routes





B Series





Ultra Light!

Ultra light design hydraulic placing booms are made of High Strength Steel which provides long life, light weight and practical use. Distribution area / weight-foot clearance rates are unbeatable. Optimization in the design is to maximize the practicability. Therefore the users describe the equipment as “job-site friendly equipment”.

Twin Drive enables users to alter the power source. In case of electric cut-off, concrete placing can continue without interruptions and short term works can be finished practically. Cost, time and performance gain is achieved at serious levels in construction sites.

Boom Construction

Produced from special quality steel with high strength, flexibility and suitability for welding. It is light, strong and long durability...

Split Frame (Detachable Boom Unit)

Simplified split system makes it possible to detach the boom unit easily. When the crane capacity is limited the detachable boom and chassis can be lifted and moved separately.

Remote Control System

4-Wheel Carriage Options

- With or without traction
- Hydraulic outriggers
- Remote control for self-travel & steering



12 Meters 4x4 Walking Hydraulic Distributor



Striker: New Product Compact Design

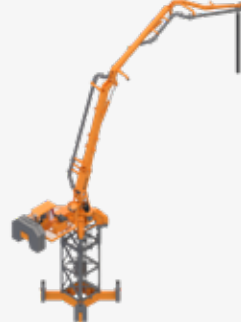


Concrete Distributors / B Series

Elevation Tower Options



Short-Outriggers with Ballast Weights (Freestanding)



Standart Outriggers (Freestanding)



Tower Base Anchored to Deck (Anchored)

Camlica TV Tower Project



The People's Salvation Cathedral is an Orthodox cathedral under construction in Bucharest that is meant to become the patriarchal cathedral of the Romanian Orthodox Church. It is the tallest and largest Orthodox church in the world by volume.



The People's Salvation Cathedral



Antalya Expo Tower Project



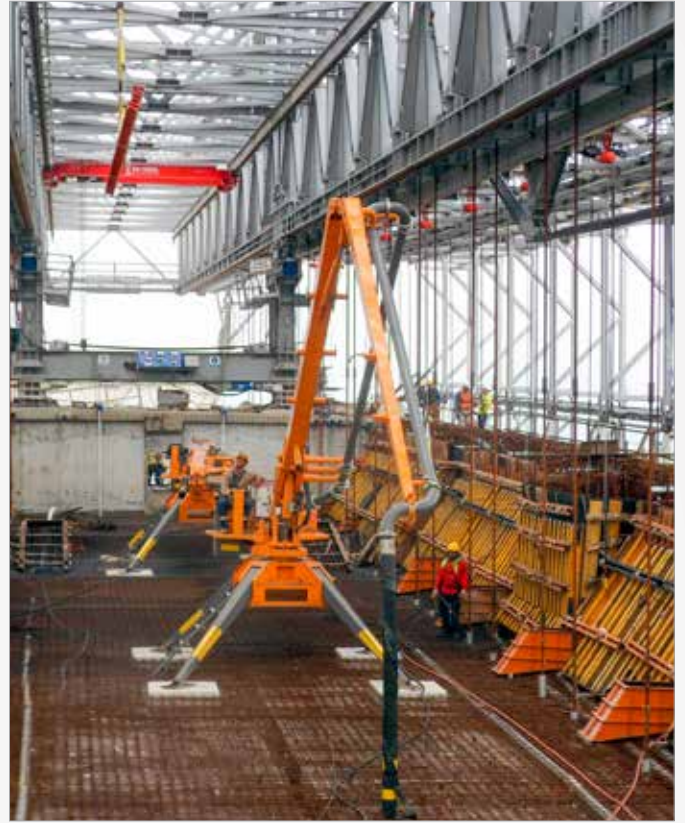
Eyiste Viaduct Project



B15 on TW14 Elevation Tower (India)



Concrete Distributors / B Series



B Series: Used In High-Rise Buildings, Tunnel And Bridge Construction



M Series





Optimum Design

Optimum design hydraulic placing booms are made of High Strength Steel which provides long life, light weight and practical use. Distribution area / weight-feet clearance rates are unbeatable. Optimization in the design is to maximize the practicability. Therefore the users describe the equipment as “site friendly equipment”.

Twin Drive enables users to alter the power source. In case of electric cut-off concrete placing can continue without interruptions and short term works can be finished practically. Cost, time and performance gain is achieved at serious levels in construction sites.

Boom Construction

Produced from special quality steel with high strength, flexibility and suitability for welding. It is light, strong and long durability...

Split Frame (Detachable Boom Unit)

Simplified split system makes it possible to detach the boom unit easily. When the crane capacity is limited the detachable boom and chassis can be lifted and moved separately.

32 Meters 4 Boom Climbing Type Concrete Distributors





BW Series





Converts Your “Stationary Pump” to “Mobile Pump”!

BW 21

- Easily Transported, Thanks to The Modular Structure with (Optional)
- Remote Control System
- Option of Diesel, Petrol or Electric Engines
- The Unique 4-Wheel Driven Hydraulic Placing Boom in The World!
- Hydrostatic 4-Wheel Drive!

BW 24

- There is a Wireless Remote Control
- Diesel Engine
- Without Ballast





BW Series: 4x4 Mobile Concrete Distributor, Closer to Perfect Mold





PS Series





Maximum Conformity to Application Place

- With 360° Slew Motion
- Hydraulic Boom Activated With Lift Cylinders
- Hydraulic Cylinder Activated With Hydraulic Manual Pump
- 4 Trolley Wheels For Easier Transport
- Folding Outriggers With Mechanical Jacks For Maximum Conformity to Application Place



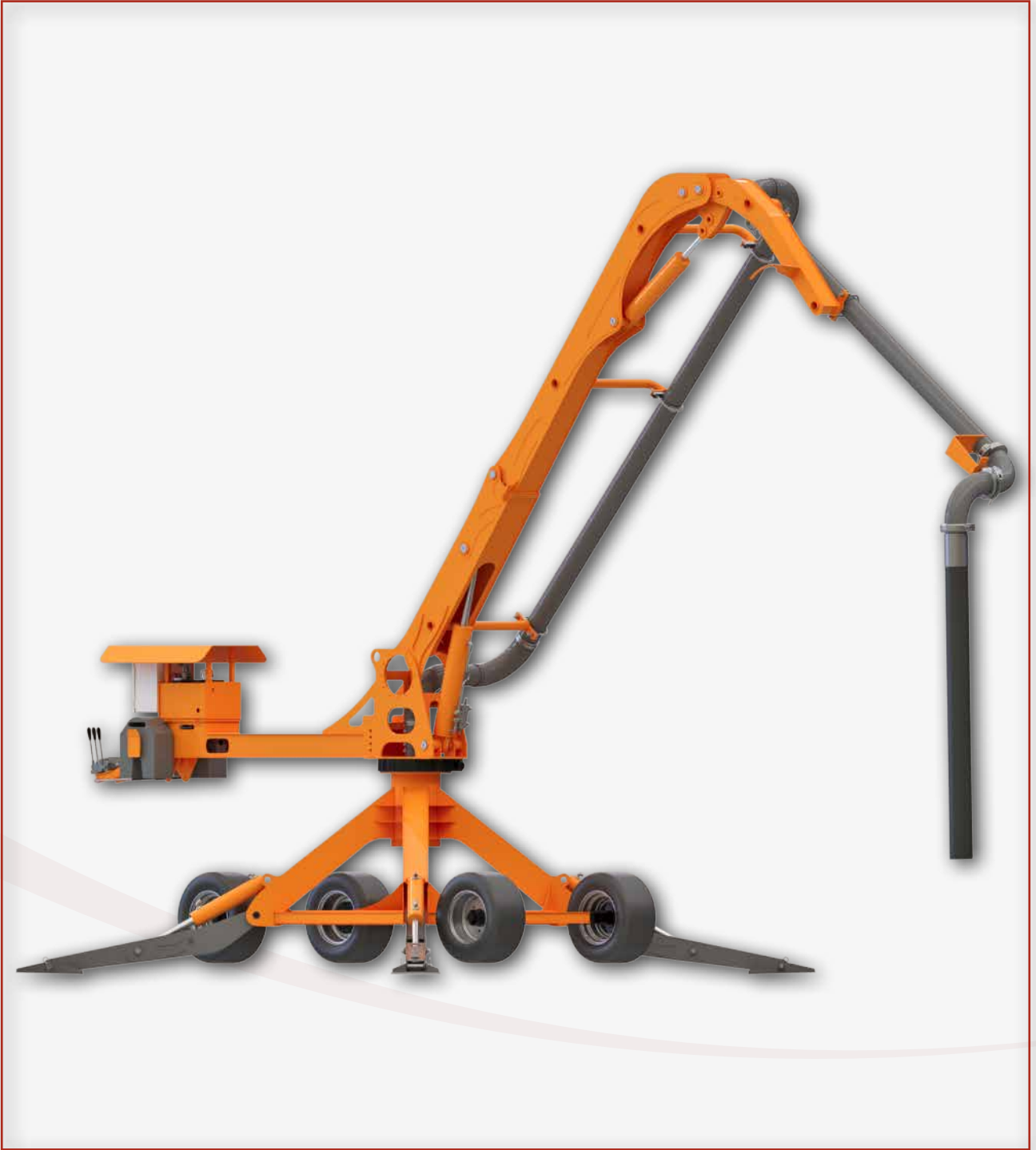
PS 07

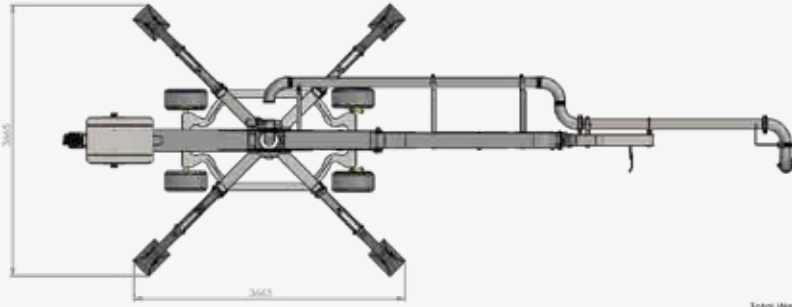
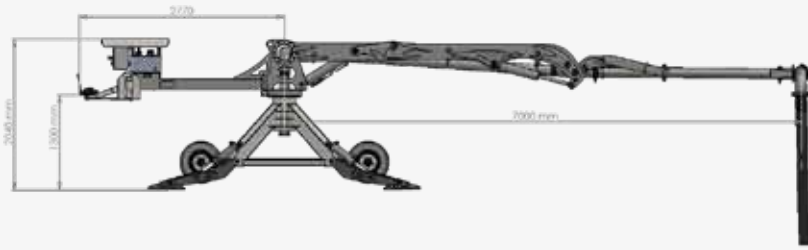


PS 05

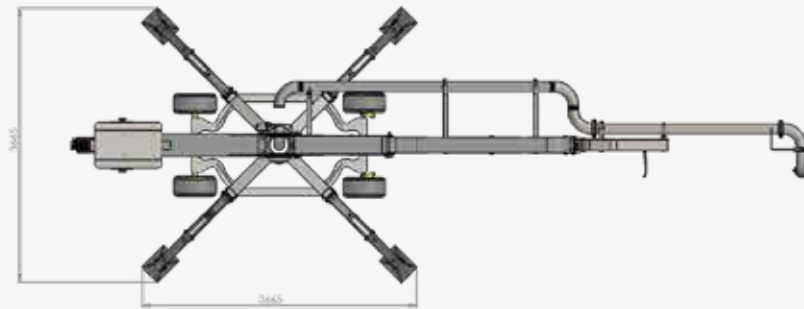
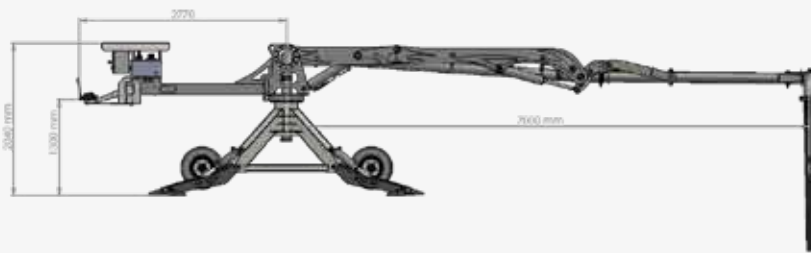


Alcanzador Series





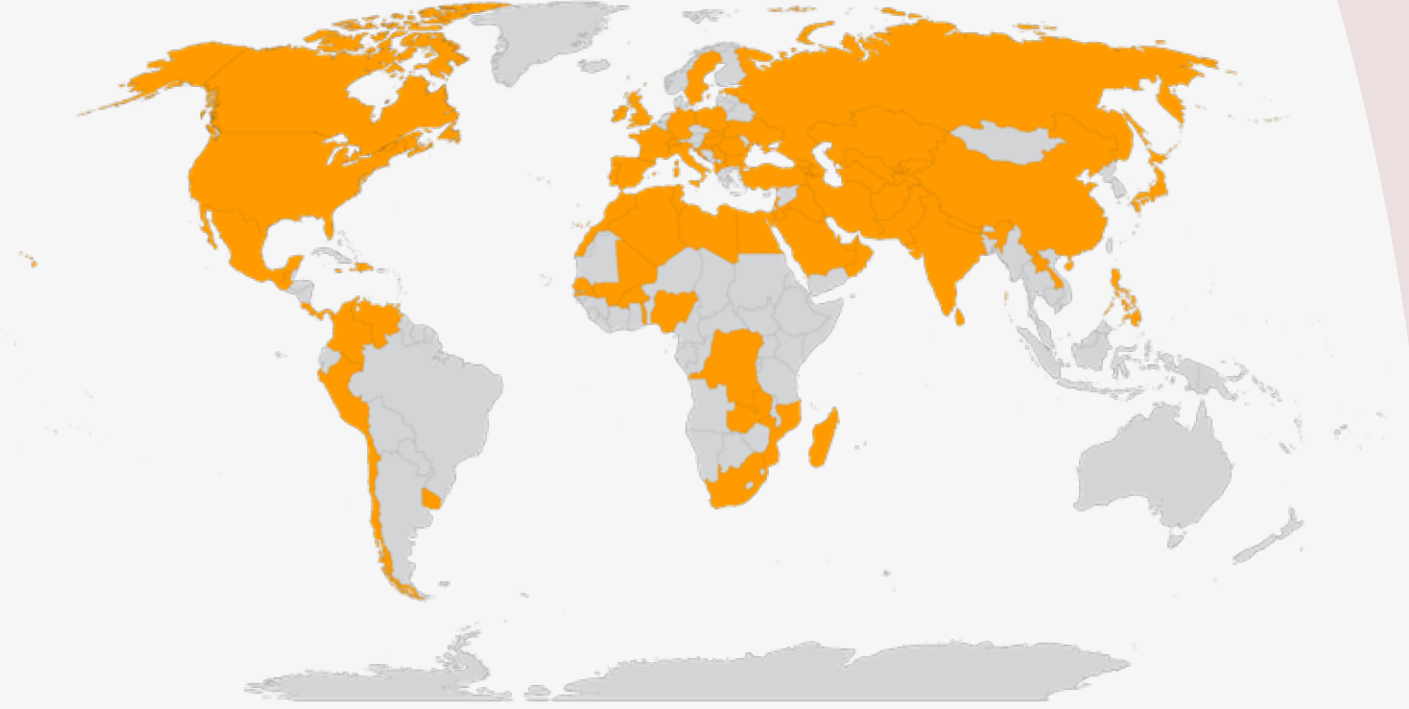
Total Weight: 1550 kg



Total Weight: 1550 kg



Atabey; Common language of concrete
placer's in more than 80 countries



/AtabeyBetonMakinalari



/atabeyconstructionequipment



atabey construction equipment



ATABEY CONSTRUCTION EQUIPMENT

Address: Keresteciler San. Sit. 4. Cad. No: 39 Kahramankazan / Ankara - TURKEY
Phone: +90 312 441 11 33 Fax: +90 312 441 58 88
www.atabeymakina.com